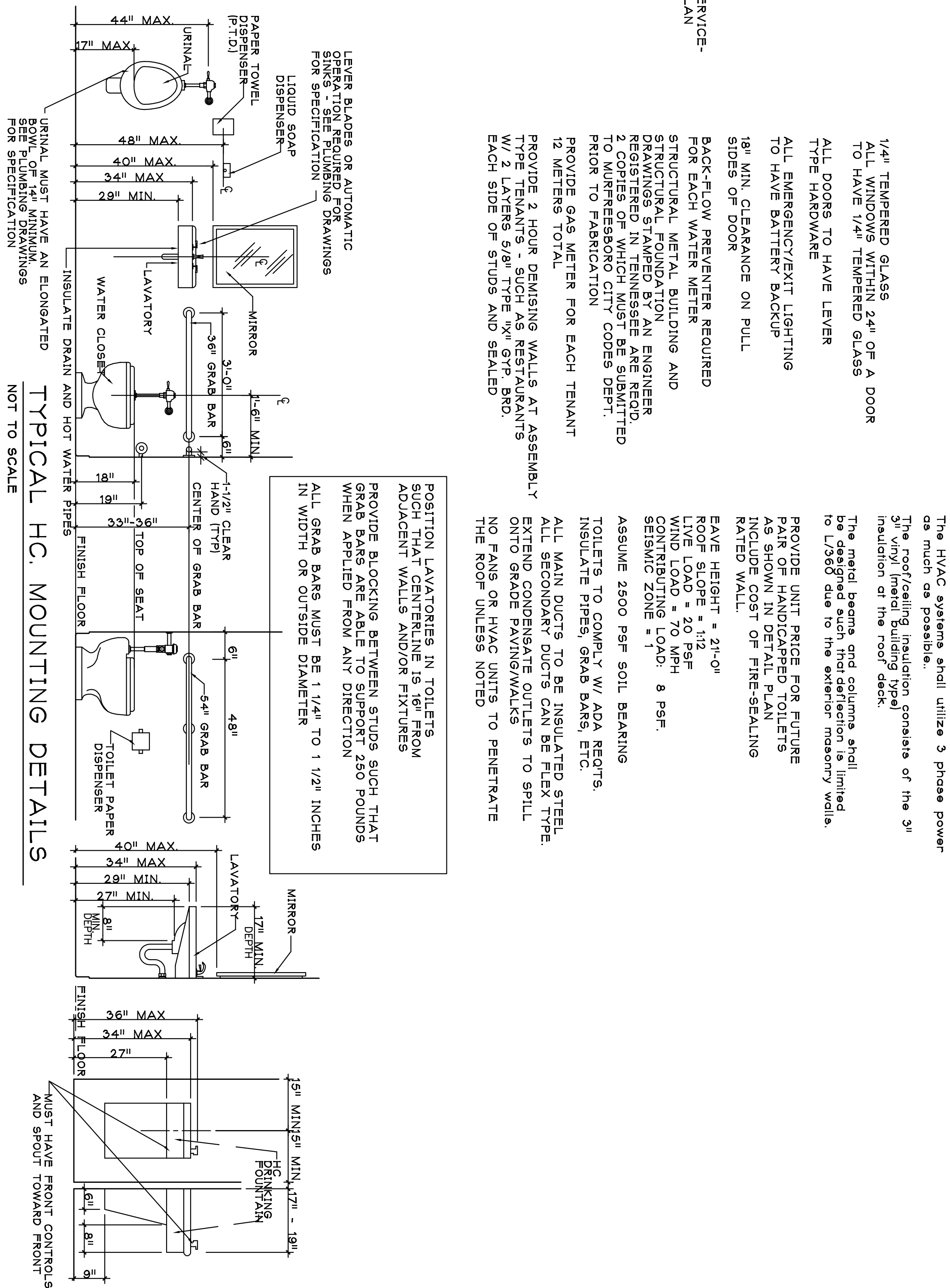


7000 GROSS SQUARE FEET

NEW 3 5/8" STEEL STUDS AT 16" O.C.
TO RECEIVE 1/2" MINIMUM GYPSUM
BOARD. USE MR BOARD AT TOILET
SEE FRAMING NOTE BELOW
INSTALL MINIMUM 3" INSULATION FOR
SOUND AT TOILET.

REAR ELEVATION

SCALE: 1/8" = 1'-0"



1/4" TEMPERED GLASS
ALL WINDOWS WITHIN 24" OF A DOOR
TO HAVE 1/4" TEMPERED GLASS

ALL DOORS TO HAVE LEVER
TYPE HARDWARE

ALL EMERGENCY/EXIT LIGHTING
TO HAVE BATTERY BACKUP

18" MIN. CLEARANCE ON PULL
SIDES OF DOOR

BACK-FLOW PREVENTER REQUIRED
FOR EACH WATER METER

STRUCTURAL METAL BUILDING AND
DRAWINGS STAMPED BY AN ENGINEER
REGISTERED IN TENNESSEE ARE REQ'D.
TO MATERIALSBOOK CITY CODES DEPT.
FOR FABRICATION

PROVIDE 6AS METER FOR EACH TENANT
12 METERS TOTAL

PROVIDE 2 HOUR DEMISING WALLS AT ASSEMBLY
FLOOR LEVELS, 3RD TYPE INW/STANDARD.
EACH SIDE OF STUDIOS AND SEALED

THE HVAC systems shall utilize 3 phase power
as much as possible..

The roof/ceiling insulation consists of the 3"i
3"i vinyl lined building Typel
insulation at the roof deck.

The metal beams and columns shall
be designed such that deflection is limited
to L/360 due to the exterior masonry walls.

PROVIDE UNIT PRICE FOR FUTURE
PAIR OF HANDICAPPED TOILETS
AS SHOWN IN DETAIL. PLAN
INCLUDE COST OF FIRE-SEALING
RATED WALL.

EAVE HEIGHT = 21'-0"
ROOF SLOPE = 1:12
LIVE LOAD = 20 PSF
WIND LOAD = 70 MPH
CONTRIBUTING LOAD: 8 PSF.
SEISMIC ZONE = 1

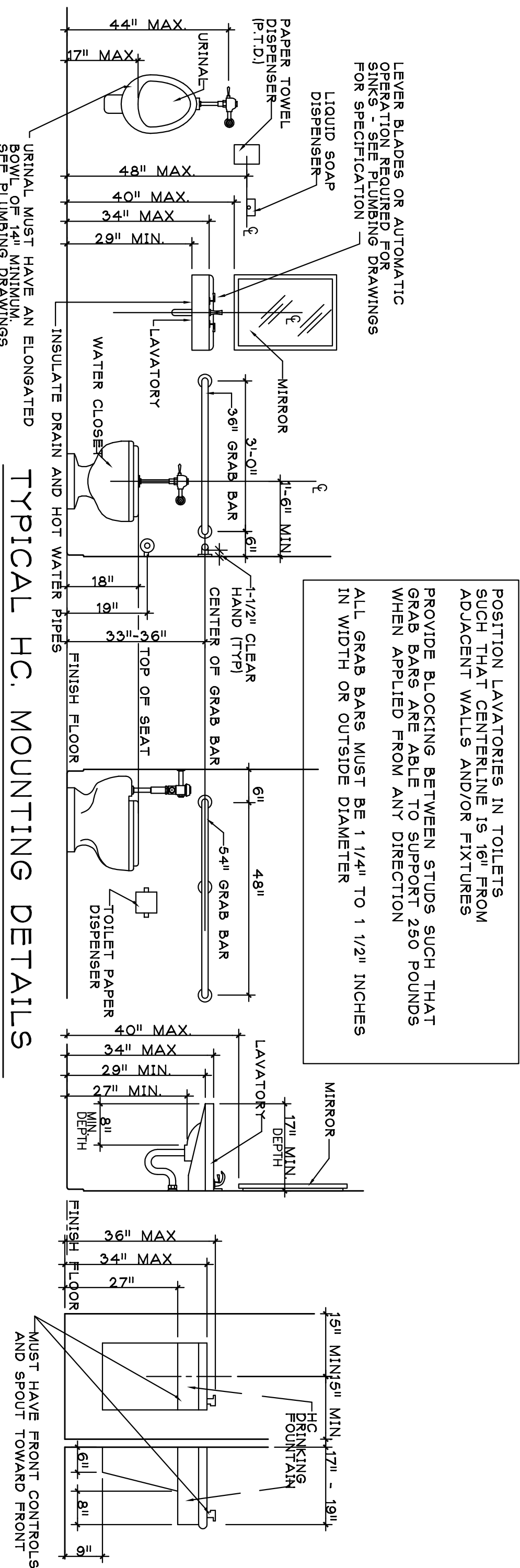
ASSUME 2600 PSF SOIL BEARING

TOILETS TO COMPLY W/ ADA REQ'TS.
INSULATE PIPES, GRAB BARS, ETC.

ALL MAIN DUCTS TO BE INSULATED STEEL
ALL SECONDARY DUCTS CAN BE FLEX TYPE.
EXTEND CONDENSATE OUTLET/LETS TO SPILL
ONTO GRADE PAVING/WALKS

NO FANS OR HVAC UNITS TO PENETRATE
THE ROOF UNLESS NOTED

TYPICAL HC. MOUNTING DETAILS



FRONT ELEVATION

SCALE: 1/8" = 1'-0"



SCALE: 1/8" = 1'-0"