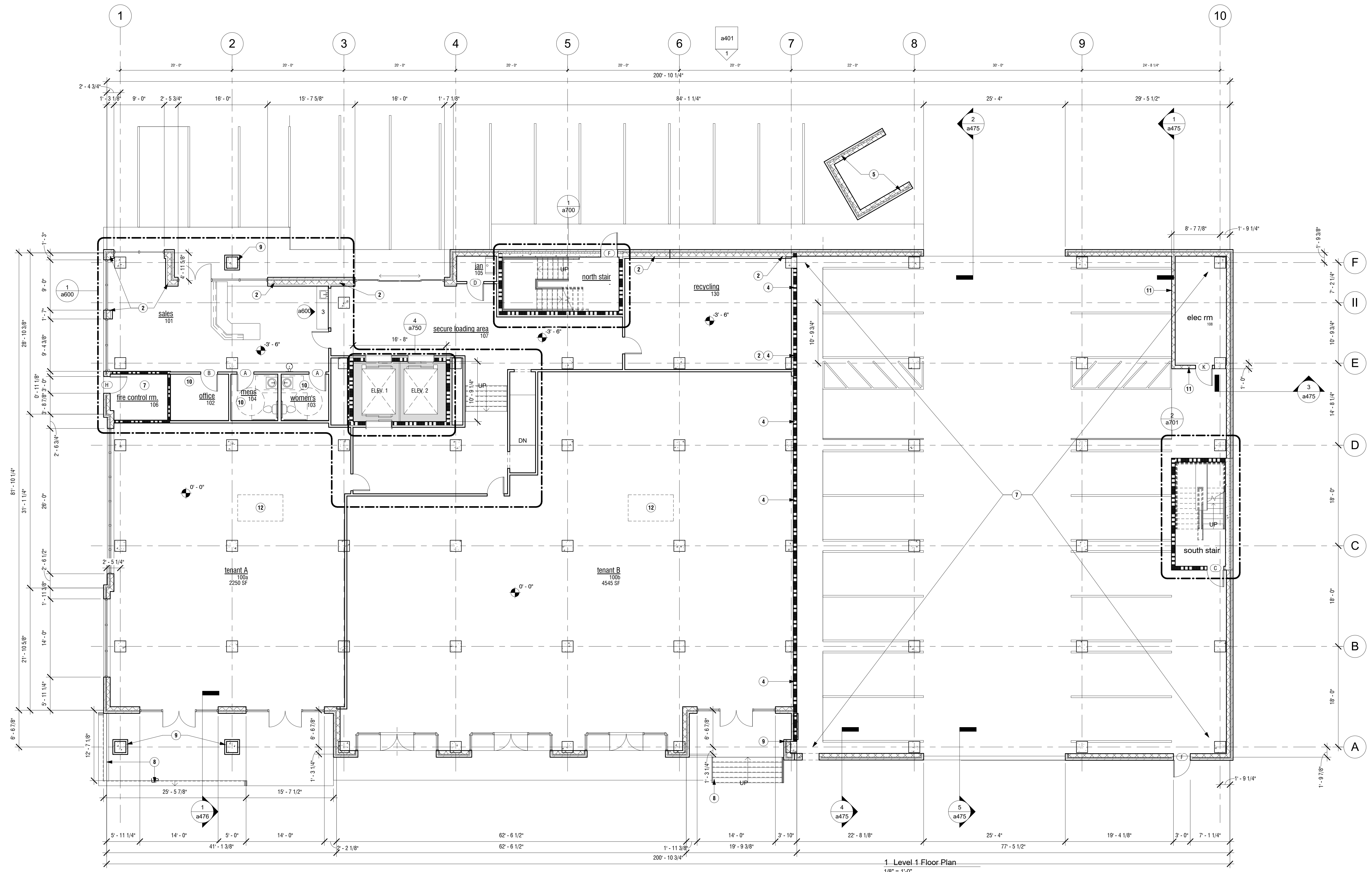
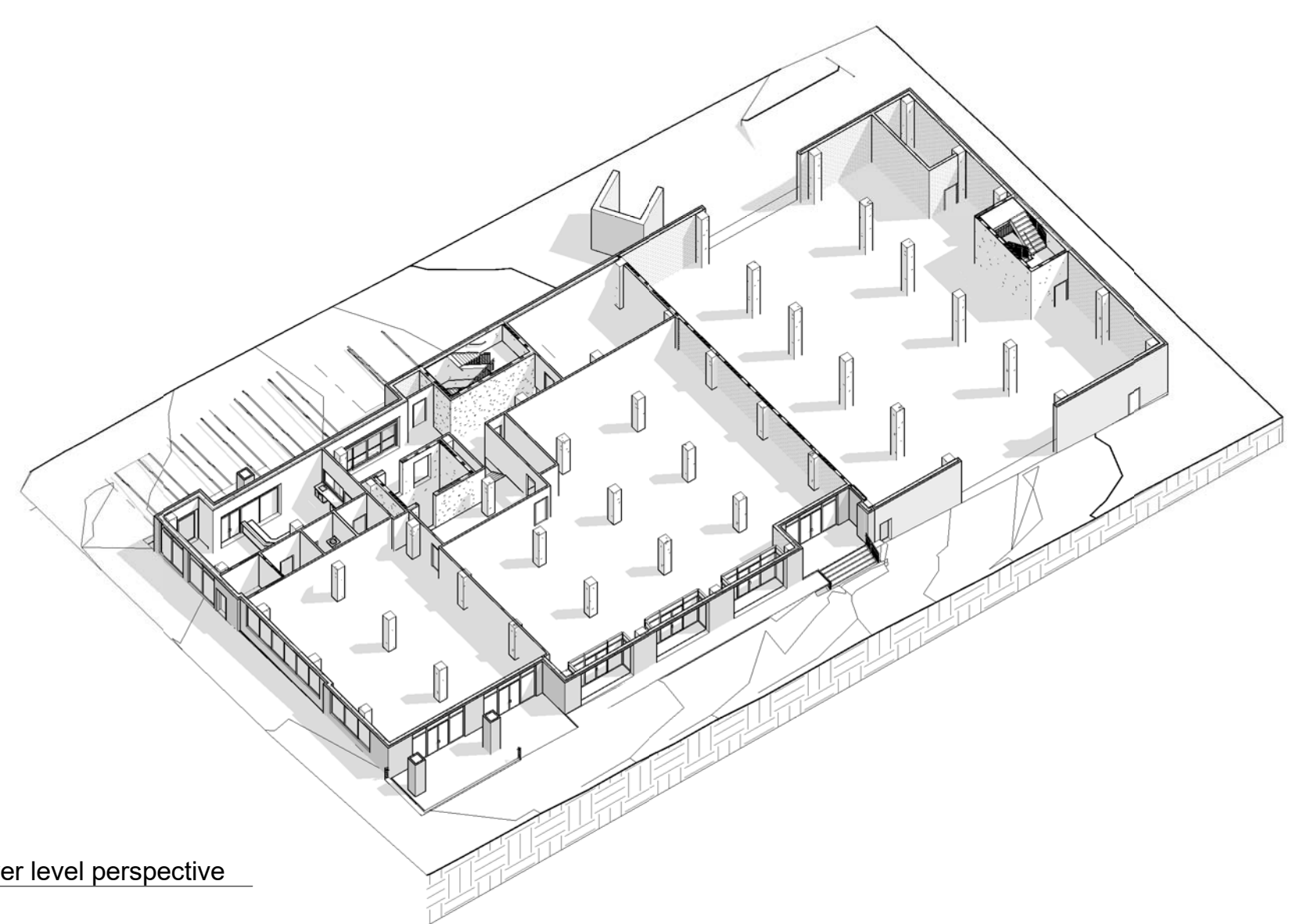


listen think
 This drawing and the design shown is the property of the Architect. The reproduction, copying, or use of this drawing without their written consent is prohibited and any infringement will be subject to legal action.



1 Level 1 Floor Plan
 1/8" = 1'-0"



2 lower level perspective

wall legend

- EXISTING CONSTRUCTION**
- NON-RATED WALL
- NEW CONSTRUCTION**
- NON-RATED PARTITION - SEE DETAIL 01/G150
 - SOUND PARTITION - SEE DETAIL 02/G150
 - 1 HOUR RATED PARTITION - SEE DETAIL 03/G150
 - 2 HOUR RATED PARTITION - SEE DETAIL 04/G150
 - 2 HOUR RATED SHAFT PARTITION - SEE DETAIL 05/G150

symbols

- NEW DOOR (TYPE A) - REFER TO SHEET A575
- SURFACE MOUNTED FIRE EXTINGUISHER
- EXTERIOR

general notes

- REFER TO SHEET A576 FOR EXTERIOR WINDOW TYPES & STOREFRONT DOORS.
- REFER TO SHEET A575 FOR DOOR TYPES AND DOOR SCHEDULE.
- ALL PUBLIC CORRIDORS TO MAINTAIN A MINIMUM OF 4'-0" CLEAR.
- REFER TO SHEET A300 FOR ROOF PLAN.
- REFER TO SHEET A400 AND A401 FOR WINDOW TAGS.
- REFER TO ELEC. FOR LIGHTING PLANS.
- STORAGE UNIT PARTITIONS AND ROLL-UP DOORS BY VENDOR.
- ALL STRUCTURAL STEEL TO BE SPRAY FIRE-PROOFED, 1HR. - REFER TO UL ASSEMBLIES.

plan notes

- 6" METAL STUD, THIS WALL.
- FURR OUT WITH 3/8" MTL. STUD AND 5/8" GYP. BD. (ADD 3" BATT INSUL. WHERE THIS OCCURS ON AN EXTERIOR WALL).
- 2HR RATED EXTERIOR WALL, THIS WALL - REFER TO G177.
- 1HR 8" CMU PARTITION - REFER TO G176.
- DUMPSTER ENCLOSURE - REFER TO A525 AND CIVIL.
- DUMMY ROLL UP DOOR - REFER TP VENDOR.
- SPRAY STRUCTURAL ABOVE W/ 2" CLOSED-CELL FOAM INSULATION.
- POURED CONC. STEPS, 11" TREADS, RISERS N.T.E. 7" - REFER TO CIVIL.
- CONC. COLUMN WRAPPED IN EIFS.
- GYP. BD CEILING, THIS ROOM, AT 10'-0" A.F.F.
- 8" CMU PARTITION.
- AREA OF SHAFT OPENING ABOVE.

b3studio inc
 1104 west main street || franklin, tennessee || 37064
 615.469.7856 || info@b3studio.com || www.b3studio.com

client:

project:

germantown storage
 1232 3rd ave north || nashville, tn || 37208

- revisions:
- △
 - △
 - △
 - △
 - △

date: 24 march 2017
 project no.: a10600.00

level 1 floor pan

a110