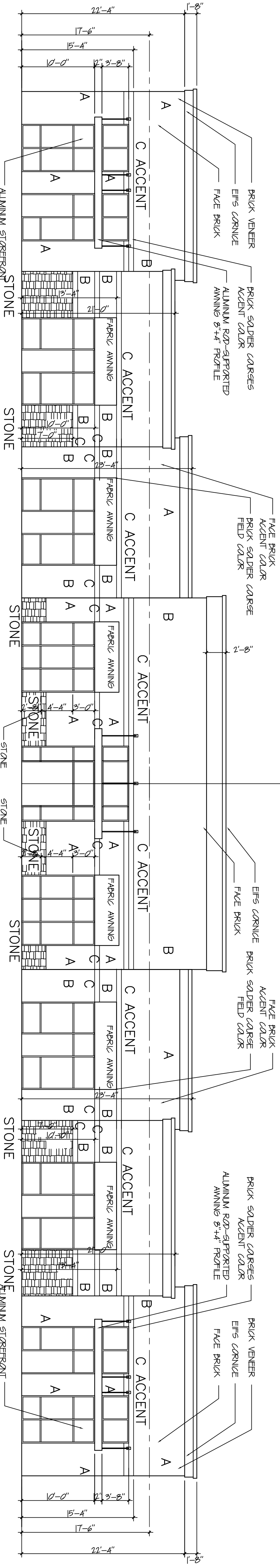


FLOOR PLAN

1/8" = 1'-0"

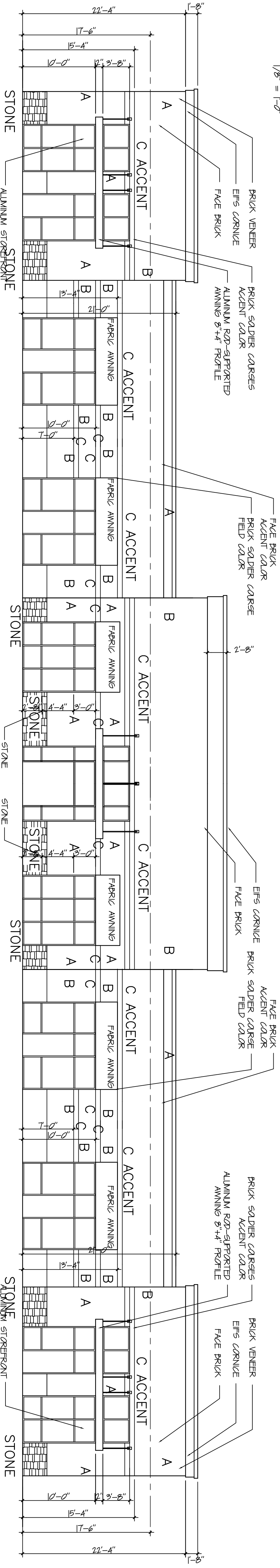
MATERIALS ARE SYMMETRICAL ABOUT CENTER



FRONT ELEVATION-HILLWOOD DESIGN

1/8" = 1'-0"

MATERIALS ARE SYMMETRICAL ABOUT CENTER



FRONT ELEVATION-MODIFIED DESIGN

1/8" = 1'-0"

FLOOR PLAN AND ELEVATION

W. Michael Stewart  
Architecture

1318 Tomahawk Trace

Murfreesboro, Tennessee 37129

LASCASSAS COMMERCIAL  
HIGHWAY 99  
MURFREESBORO, TENNESSEE

A-1

MAY 10, 2009  
SCALE 1/8" = 1'-0"